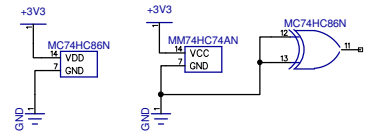


- From Jaycar
- HC86 \$1.25
 - HC161 \$2.25
 - HC151 \$1.95
 - HC74 \$1.00

Note: -
 By using dual edge mono any DCD transition will trigger the sequence, saving a USB transmission. Perhaps more certain control with DCD direct to latch clock.



Four phase ICSD driver			
Keith Williams August 2014			
SIZE	FSCM NO.	DWG NO.	REV
SCALE			Sheet 1